



UNRIVALED EFFECTIVENESS, UNMATCHED DURABILITY

UV-WATER devices can provide effective **inactivation of a wide range of viruses and bacteria** in water.

All products **comply with the regulations** of EC safety and D.M. 174/2004 concerning materials suitable for contact with water for human consumption.

The use of UVC allows a disinfection process which **does not affect smell, taste and pH** of the treated water.



KEY PRODUCT FEATURES

- **Made for the Task**, this special form factor has been designed and developed to maximize penetration of UVC light inside water.
- **Increased Disinfection Performance**, with High-Output UV-C lamps (253,7 nm), and up-to 4 lamps in one device to treat larger water flows, continuously.
- **Quartz sleeve**, containing the UVC lamp serves to thermally and hydraulically isolate the UV-C bulb, creating optimal conditions for water purification.
- **UVLON™ “shatterproof” protective sleeve always included** and applied to the Quartz, to prevent the release of glass fragments in the event of accidental Quartz breakage, while reducing biofilm formation and the need for routine maintenance.
- **Built to last**, with high-quality Stainless Steel AISI 316L, Made in Italy, and all materials are tested for resistance to intense UV-C rays; **IP67 degree of protection for multi-lamp models intended for industrial use.**
- **Monitor Your Operation**, Supply Box and Control Board are equipped with Alarm Signals and Digital Hour Counters.



HEALTHCARE



HVAC



PROCESS
INDUSTRY



HOSPITALITY



SHARED
SPACES



PUBLIC
VENUES



WELLNESS
CENTRES



TRANSPORT

TECHNICAL TABLE	UV-WATER -21-Ba	UV-WATER -40H-Ba	UV-WATER -42-Ba	UV-WATER -90H-Ba	UVWATER -3/90H-C	UVWATER -4/90H-C
BEST USE	RESIDENTIAL	COMMERCIAL	RESIDENTIAL	COMMERCIAL	INDUSTRIAL	
REPLACEMENT LAMP	n°1 GH4-21W	n°1 GH4-40WH	n°1 GH9-42W	n°1 GH9-90WH	n°3 GH9-90WH	n°4 GH9-90WH
POWER CONSUMPTION	21W	40W	42W	90W	270W	360W
DIMENSIONS (WxHxD)	mm 590 x 503 x 123 (in 23 1/4" x 19 3/4" x 4 7/8")		mm 1060 x 964 x 130 (in 41 3/4" x 38" x 5 1/8")		mm 1030 x 168 x 238 (in 40 1/2" x 6 5/8" x 9 3/8")	
WATER FLOW RATE (30mJ/cm ² UVT = 95%)	1.900 l/h (0,5 l/s) 8.4 gpm	3.200 l/h (0,9 l/s) 14 gpm	3.800 l/h (1 l/s) 16.7 gpm	8.000 l/h (2 l/s) 35 gpm	18.000 l/h (5 l/s) 79 gpm	24.000 l/h (7 l/s) 106 gpm
WEIGHT	kg 3 lb 6.61		kg 5 lb 11.02		kg 10 lb 22.04	kg 12 lb 26.45
IN / OUT (ISO 228.1)	3/4" GAS (BPSP)		1" GAS (BPSP)		2" GAS (BPSP)	
	FOR ALL MODELS				FOR ALL MODELS	
LAMP LIFE *	365 days				9000 hours	
OPERATING PRESSURE	5 Bar (500 kPa) 72.5 psi				6 Bar (600 kPa) 87 psi	
PROTECTION RATING	IP 20				IP 20	
OP. TEMPERATURE**	MIN. -15°C ÷ MAX. +40°C (MIN. 5.0°F ÷ MAX. +104.0°F)				MIN. -15°C ÷ MAX. +40°C (MIN. 5.0°F ÷ MAX. +104.0°F)	
OP. RELATIVE HUMIDITY**	From 20 to max. 90%				From 20 to max. 90%	
POWER SUPPLY	Supply Box "Ba"				Control Board "MASTER-WATER-n/90H-C"	

* Useful life can be substantially reduced by several environmental or technical factors

** Outside of these ranges, performance may not be optimal

TROUBLE-FREE INTEGRATION AND INSTALLATION



- We provide the optimal point of integration for every product without requiring changes to your system.
- Mounting and powering the device can be done without complex requirements.
- Ongoing maintenance only takes a few minutes to replace lamps when necessary.

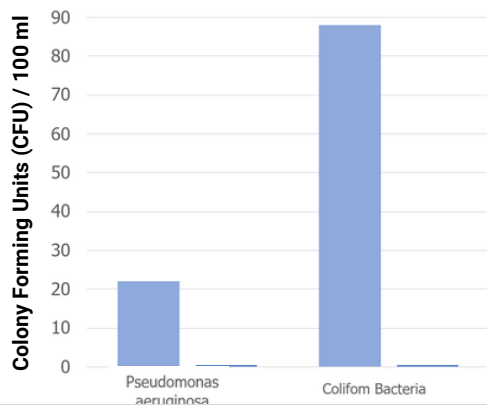
TECHNICAL DRAWINGS

Every Light Progress Product is available in detailed DWG and STEP files for your design-in and specification clarity.

VIEW or DOWNLOAD now



MICROBIAL TESTS AND EFFICACY



■ Before UV
■ After UV



Microbial reduction after UV treatment

Light Progress customers rely on our extensive history of third party testing and proven efficacy to meet any level of disinfection validated against literally any virus or microorganism.

We understand your need to meet Regulatory Requirements and Industrial Standards as we help you achieve microbial load reduction using our UV systems.

Light Progress Group SRL
Anghiari (AR)
ITALIA
P: (+39) 0575 749255
E: info@lightprogress.it
W: www.lightprogress.it

Light Progress GmbH
Aschaffenburg (BY)
DEUTSCHLAND
P: +49 176 761 42327
E: gmbh@lightprogress.de
W: www.lightprogress.de

Light Progress LLC
Dallas, (TX)
USA
P: (+1) 833-882-4255
E: americas@lightprogress.it
W: www.lightprogress.us

OFFICIALLY DISTRIBUTED BY:

CONTROL BOARDS		
	SUPPLY BOX «Ba»	CONTROL BOARD «MASTER-WATER»

MAIN FEATURES						
---------------	--	--	--	--	--	--

MODEL	Ba-H-42		Ba-H-90H		MASTER-WATER 3/90H-C	MASTER-WATER 4/90H-C
COMPATIBLE UVC DEVICE (W)	UV-WATER -21-Ba	UV-WATER -42-Ba	UV-WATER -40H-Ba	UV-WATER -90H-Ba	UVWATER -3/90H-C	UVWATER -4/90H-C
CONTROL OF MULTIPLE DEVICES	-				-	
FAULTY LAMP ALARM	<ul style="list-style-type: none"> ✓ LED indicator ✓ Acoustic alarm 				<ul style="list-style-type: none"> ✓ LED indicator ✓ Dry contact output * (up to 230V-1A) 	
EXHAUST LAMP ALARM	<ul style="list-style-type: none"> ✓ LED indicator ✓ Acoustic alarm 				<ul style="list-style-type: none"> ✓ LED indicator 	
LAMP LIFE HOUR COUNTER	<ul style="list-style-type: none"> ✓ Digital Display 				<ul style="list-style-type: none"> ✓ Digital Display 	
SAFETY INPUT contact from BMS or Safety System	-				-	
SYNOPTIC SCHEME	-				<ul style="list-style-type: none"> ✓ LED indicator 	
POWER CABLE connection to the mains	Cable (3x1 mm ²) lenght 1,5 m (in.4' 11), with IEC plug (SCHUKO/other)				Three-core cable 2P+E (not included).	
CONNECTION PLUG on lamp side	Wired cable, length 1.5 m (4 ft 11 in).				M12 female connector. Cable lenght 3 m (in. 9' 10 ½)	
INSTALLATION Mounting options	Screws (not included)				Screws (not included)	

TECHNICAL FEATURES						
--------------------	--	--	--	--	--	--

MODEL	Ba-H-42		Ba-H-90H		MASTER-WATER 3/90H-C	MASTER-WATER 4/90H-C
ELECTRONIC CONTROL GEARS ON BOARD	1				3	4
DIMENSIONS (mm) (W x H x D)	200x80x57				326x410x125	
DIMENSIONS (in) (W x H x D)	7 7/8" x 3 1/8" x 2 1/4"				12 7/8" x 16 1/8" x 4 7/8"	
HOUSING MATERIAL	Aluminum and plastic.				ABS	
OPERATING TEMPERATURE**	min. -15°C ÷ max. +40°C (min. 5.0°F ÷ max. +104.0°F)				min. -15°C ÷ max. +40°C (min. 5.0°F ÷ max. +104.0°F)	
PROTECTION	IP 20				IP 67	
V AC FREQUENCY	110V-240V 50/60 Hz				240V o 110V 50/60 Hz	

* Dry contact output to be externally powered - to activate an external diagnostic system (BMS, MMS, SCADA, DCS, PLC)

** Outside of these ranges, performance may not be optimal